

DESIGN DOSSIER



BEDFORD SPRINGS

opened 2007





Bedford Springs: A History of Transformation

With a bold, contemporary approach to history, 3north leads the renovation design of a venerable American resort.



Bedford Springs, located at the foot of the Allegheny Mountains in western Pennsylvania, reopened in July 2007 after a \$120 million renovation headed up by 3north. Approaching the project with their signature cross-disciplinary methodology, 3north achieved a daring combination of the historic and the new. The venerable grandeur of Bedford Springs has been enhanced and rejuvenated with a renovation design that pays homage to its past while injecting the vitality of the present.

Tasked by Bedford Resort Partners in 2003 with the leading design role for all aspects of the extensive project, 3north counted among its responsibilities: consultation on restoration of historic exterior architecture, new design of the added Springs Eternal House, total design of landscape across the 28-acre site (including a new outdoor pool complex), comprehensive interior design (including interior architecture



Bedford Springs, located at the foot of the Allegheny Mountains in western Pennsylvania, reopened in July 2007 after a \$120 million renovation headed up by 3north. Approaching the project with their signature cross-disciplinary methodology, 3north achieved a daring combination of the historic and the new. The venerable grandeur of Bedford Springs has been enhanced and rejuvenated with a renovation design that pays homage to its past while injecting the vitality of the present.

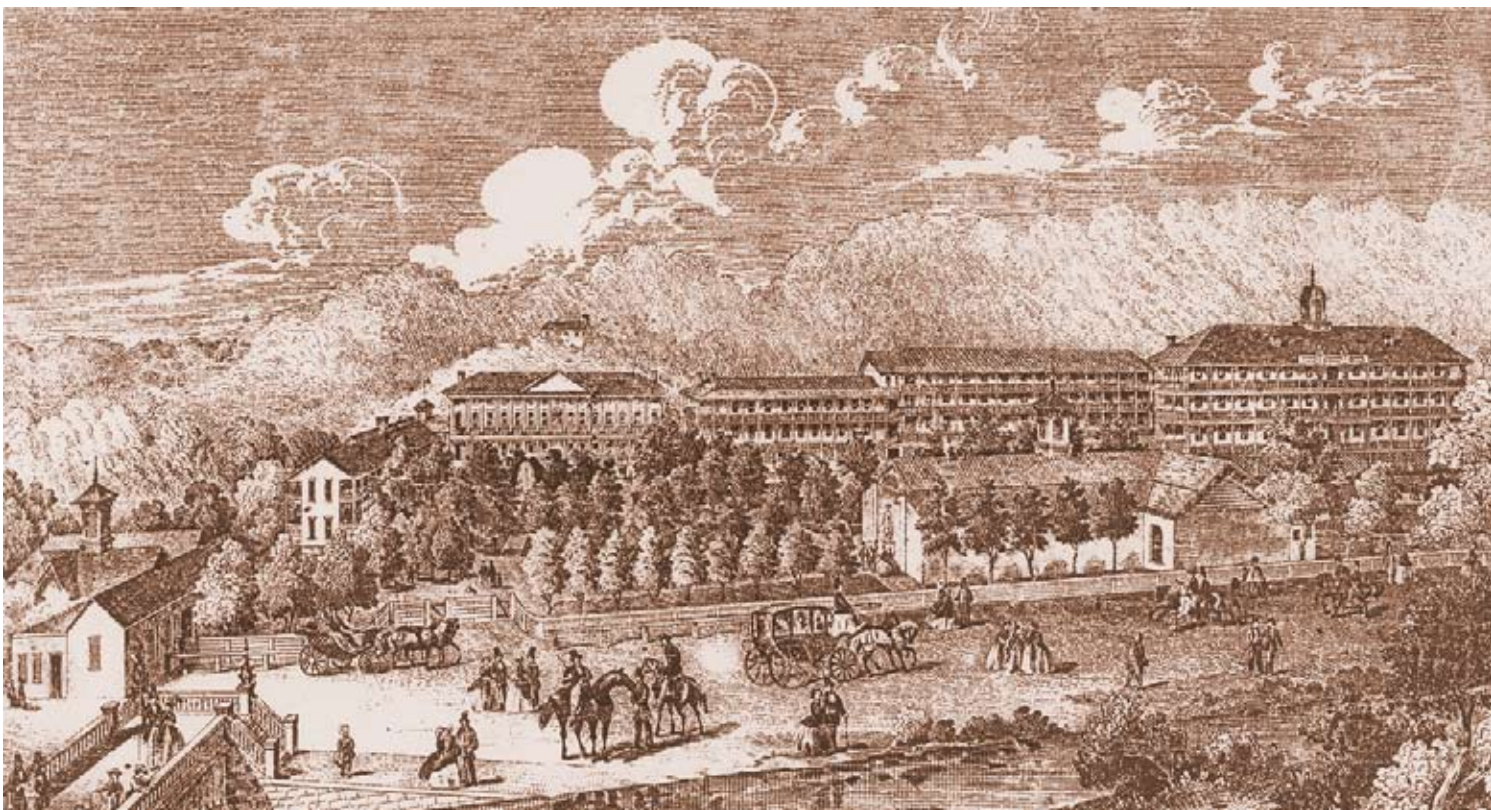
Tasked by Bedford Resort Partners in 2003 with the leading design role for all aspects of the extensive project, 3north counted among its responsibilities: consultation on restoration of historic exterior architecture, new design of the added Springs Eternal House, total design of landscape across the 28-acre site (including a new outdoor pool complex), comprehensive interior design (including interior architecture as well as furnishings, fixtures, and equipment), creation of sign and way-finding systems, creation and production of artwork and exhibit design, and responsibility for historic interpretation.

Project Background

Bedford Springs, one of America's oldest mineral spring water resorts, grew from a backwoods collection of rudimentary bathhouses at the beginning of the 19th century to a full-service resort destination by mid-century. The allure of the healing properties of the property's seven mineral springs, which prompted guests to seek cures as early as 1796, grew to mythical proportions throughout the 19th century. By 1804, bathhouses and lodging had been constructed, but the major building campaigns ensued later in the century.

A remarkable architectural eclecticism at Bedford Springs resulted from the coupling of the monumental, Greek Revival style Colonnade Building (1842) with the Italianate and Queen Anne styles of Evitt House (1840/1890), Stone Inn (1806), Swiss Cottage (1856), and Anderson House (1890). The sober columns of the Colonnade's loggia, rendered in the Doric order, contrast with lengthy galleries of open-air, bracketed porches that stretch out along the valley in stunning architectural repetition. In 1905, a grand renovation campaign produced a sumptuous Classical Revival style building to house a palatial indoor spring water pool.

As the celebrated resort grew throughout the late 19th century, so did the grounds; at mid-century, a spring water fountain surmounted by a classical sculpture of Hygeia, the Goddess of Health, graced the lawn. In the second half of the 19th century, fanciful springhouses and pavilions were



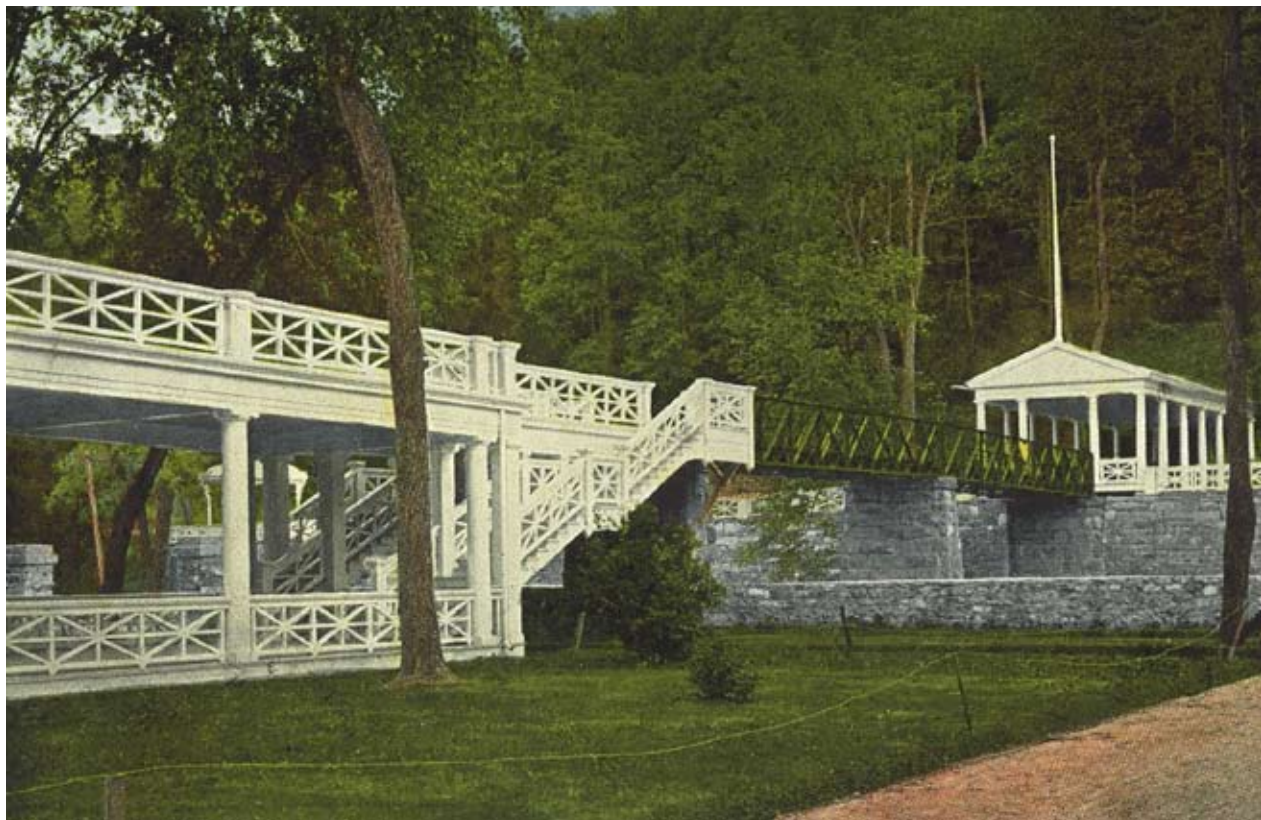


constructed, and follies such as colorfully painted turnstiles, footbridges, and ornamental gates transformed the grounds into a veritable pleasure garden. In 1895, one of the nation's earliest golf courses, designed by Spencer Oldham, opened at Bedford Springs. Later renovated by A. W. Tillinghast in 1912 and Donald Ross in 1923, the Old Course stands as testament to the talents of these legendary golf course architects.

The combination of therapeutic mineral spring water, grand architecture, and a breathtaking setting at the foot of the Allegheny Mountains made Bedford Springs a key resort destination. Hotel ledgers from the 19th and early 20th centuries verify the names of celebrated guests, including at least six U.S. Presidents, numerous U.S. congressmen and senators, Civil War generals, and countless giants of industry and business. The hotel thrived until the advent of World War II, during which it served as a training school for Navy radio operators, and later as an internment camp for Japanese diplomats. Bedford Springs reopened, but like so many of America's historic resorts in the post-war era, the property never regained its former glory and status as a travel destination. Although listed on the National Register of Historic Places in 1984, and further distinguished as a National Historic Landmark in 1991, the complex closed, dilapidated and flood-damaged, in 1992; Bedford Springs stood for many years as one of Pennsylvania's most endangered historic properties.



3north's Approach





3north, a multi-disciplinary design collaborative composed of architects, interior designers, landscape architects, graphic designers, artists, and historians, approached the comprehensive renovation design of Bedford Springs by creating their signature I.Q. Master Plan. I.Q., an acronym for Intangible Qualities, refers to a property's inherent qualities, which have combined over time to create its unique story and sense of place. In the I.Q. Master Plan, the owners' goals for redevelopment were merged with historic, cultural, social, geographical, architectural, and regional characteristics to create a meaningful basis for a comprehensive approach to renovation design.

Out of their research and discovery phase, 3north developed three themes, which directed design concepts in terms of style and form, and color and pattern palettes; these concepts were then developed consistently throughout aspects of the design, from architecture and landscape, to interiors, service, and artwork:

TRANSFORMATION OF THE SPIRIT:



SPRINGS ETERNAL.

For more than two centuries, through an astonishing assortment of cups, containers, and bottles, and an array of baths, health regimens, and treatments, the *raison d'être* for Bedford Springs has remained the healing properties of the mineral water of the seven springs.

TRANSFORMATION OF A NATION: AMERICA'S HOME.

For over two hundred years, Bedford Springs took on the role of safe haven for America's citizens, from the most ill to the most powerful. From frontier explorations through the American Revolution, from the Civil War through the Great War, Bedford Springs hosted America's leaders, and played a part in soothing the struggles and celebrating the triumphs of the nation.

TRANSFORMATION OF THE FRONTIER: A PALACE IN THE WILDERNESS.



Bedford Springs transformed from a colonial frontier settlement to grand mineral springs resort in less than a century. The sober formality of the Colonnade Building, constructed in 1842, stands in stark contrast to the delightful frivolity of the later 19th century lodging houses. The unlikely presence of a classical building at the edge of the frontier prompted this astute observation by historian Daniel Rupp as early as 1846: "This is a palace in the wilderness - here you have the '*urbs in rure*' - the city in the woods ..."

Design Overview

While the historic building exteriors were restored to their original splendor according to preservation standards, the interior of the Colonnade Building, the crossroads of the resort, opens up to a refreshing, contemporary interpretation





of historic precedent. Emboldened color palettes and a plethora of historic wallpaper patterns combine in an unorthodox manner to enliven the walls. Custom-designed carpets, hand-woven in Thailand, reproduce historic patterns in bright colors, and help to define intimate spaces in the Great Hall. A combination of Bedford Springs' furniture, acquired antiques, reproductions, and custom furnishings and accessories provides an appropriately respectful, but updated, lively interior.

The new spa wing, a fifth lodging house, is designed to complement, but not copy the historic lodging houses. The design of the spa itself was based on the cottage aesthetic of the early bathhouses and lodges of the resort. Millwork, which reinterprets the compelling historic "gingerbread" ornament of the resort's signature verandas, combines with glittering mosaic tile work to create a uniquely American spa. Similar motifs in the guest rooms - machine milled in the 19th century and laser-carved in the 21st century - contribute an update to



A decorative background featuring a stylized, light blue leaf pattern. The leaves are elongated and pointed, arranged in a branching, organic fashion across the page. The pattern is composed of several main clusters of leaves, with smaller, individual leaves scattered throughout. The overall effect is a soft, naturalistic design.

Project Plan



EVITT HOUSE

Reagan Ballroom
Business Center



COLONNADE BUILDING

Crystal Room
Che Sara Sara Café
Duke of Bedford Library
Colonnade Ballroom
Anderson Room
Buchanan Room
Eisenhower Ballroom
Harrison Room
Taylor Room
Army Room
Navy Room



SPRINGS ETERNAL HOUSE

Springs Eternal Spa
Old Course Golf Shop
Talley Ho Sport
Fitness Studio



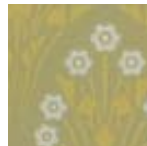
STONE INN

Frontier Tavern
Defibaugh's Table
1796 Room

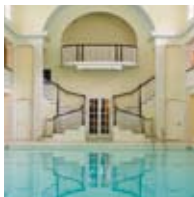
ANDERSON HOUSE



SWISS COTTAGE



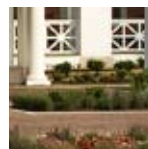
SPRINGWATER
POOL BUILDING



SPA GARDEN
& EVENT LAWN

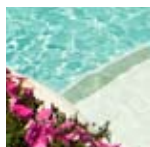


MOTOR COURT



OUTDOOR POOL
& CABANA

Resort Rascal



A decorative background featuring a stylized, light blue leaf pattern. The leaves are elongated and pointed, arranged in a branching, organic fashion across the page. The pattern is composed of several distinct clusters of leaves, with some leaves having small circular details near their bases.

Project Profile



Architecture



Bedford Springs presents an eclectic range of 19th and 20th century architectural styles. The Colonnade Building, an early example of Greek Revival completed in 1842, is positioned as a monumental centerpiece. Lodging expanded to the east between 1856 and 1890 with four houses bedecked in Italianate and Queen Ann architectonic ornament. Balancing the composition to the west is the sumptuous Spring Water Pool Building, produced in a Classical Revival renovation of 1905, and the all-new Springs Eternal House, intently representing the 21st century.

Facing Page The historic lodging buildings at Bedford Springs, constructed between 1856 and 1895 (l to r): Evitt House, Stone Inn, Swiss Cottage, and Anderson House. **1** The Pool Building, a Classical Revival building constructed in 1905 to house the indoor pool, dressing and treatment rooms, and a two-story solarium. **2** The new Magnesia Spring stairway, located in front of the Colonnade Building, crosses over Shober's Run to provide access to the springs and grotto on the opposite bank. **3** Detail of ornamental woodwork on the porches of Swiss Cottage, designed by John Skirving and constructed 1856-1857. **4** The pedimented portico of the Colonnade Building, a Greek Revival building designed by Solomon Filler and constructed 1838-1842.



Grounds

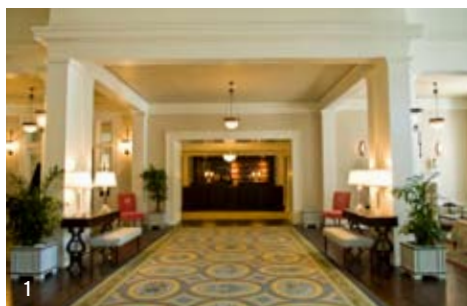


Situated in a verdant valley at the foot of the Allegheny Mountains, the resort's early outdoor activities centered on taking the waters from the seven springs linked by the "Serpentine Circuit." Golf links, added in 1895, responded to America's obsession with the game. In 2007, new outdoor amenities include spring-fed fountains, an extensive outdoor pool and building complex, restored hiking and cycling trails, an enormous fire pit outside the Stone Inn, and the renovated Old Course.

Facing Page The Spa Garden's channel fountain. Surrounded by medicinal herbs and aromatic flowers, the new fountain is fed by an 8th spring that was discovered during construction. The classical design evokes an ancestral font in honor of the eternal sources that issue forth the eight springs. **1** The Outdoor Pool, with stone walls and lush, rustic garden plantings, overlooks the golf course and valley. With pool house and pergola, snack bar and kids club, the pool is composed of three tiers: an upper tier with whirlpool and private cabanas, a main pool with zero-entry lounging shelf, and a lower tier with water garden fountain and private party area. **2** The Old Course. First developed by Spencer Oldham in 1895, the classic springs' course was renovated by golf greats A.W. Tillinghast in 1912 and Donald Ross in 1923. **3** The reconstructed Magnesia Spring stairway and temple; the new design is inspired by the historic stairway and temple in this location. **4** Bedford rockers, crafted by local artisans, lined up on the Stone Inn's outdoor dining terrace, which overlooks a horseshoe court and nearby stone fire pit.



Arrival



Arrival takes place in the new motor court amidst parterres that reflect the Colonnade Building's monumental formality. Entrance is by way of the venerable Entry Vestibule, where artwork honors the resort's history. Beyond, the restored Great Hall retains its colonnaded central corridor, and features new casework holding over 200 years of hotel ledgers. New rugs in emboldened colors define seating areas with original fireplaces and inglenooks. Registration takes place in adjoining Evitt House in front of a rare, 39-star American flag.

Facing Page New porte-cochere and lily pond fountain in front of the historic Colonnade Building at Bedford Springs. **1** Great Hall of the Colonnade Building, a Greek Revival hotel designed by Solomon Filler, and constructed 1838-1842. **2** The Colonnade Building, adjacent Evitt House (c. 1890), and parterre gardens of the new motor court. **3** 39-star American flag, dated c. 1875-1890, installed behind the new registration desk. **4** Artwork, which depicts the history of Bedford Springs, covers the walls of the historic entry vestibule of the Colonnade Building.



Public Space



Ample public space at Bedford Springs provides a broad range of spatial experiences, as well as artwork that tells the resort's story in enlightening and whimsical ways. At the Great Hall's west end, the three-level Grand Stair rises first to a mezzanine landing, then up to a display of antique hats outside the grand Colonnade Ballroom, and terminates under an awe-inspiring historic skylight. The reflective Duke of Bedford Library, with historic maps and books, the indoor porch corridor of Evitt House, where wicker chaises are poised to provide mountain views, and the glittering Pool Corridor with mosaic tile floor and interpretive artwork display, offer sundry experiences.

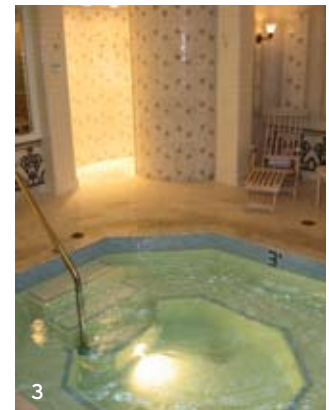
Facing Page The three-level Grand Stair in the Colonnade Building. **1** Display case with exhibit of antique hats on the first landing of the Grand Stair. **2** Original fireplaces and inglenooks create intimate seating areas in the Great Hall. **3** Quiet corner in the Duke of Bedford Library, where the window panes are etched with the signatures of past guests. **4** Collection of sixty-five antique Bedford Springs' postcards in the elevator lobby of the Springs Eternal House.



Spa



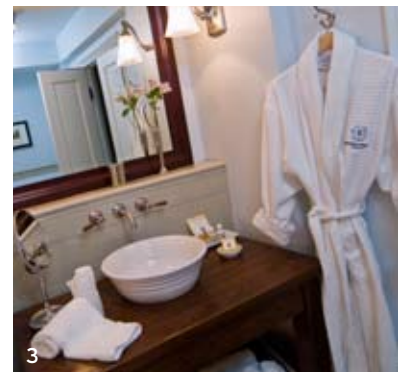
The new Springs Eternal Spa presents a specifically American model based on historic bathhouses and spa treatments at Bedford Springs. Rendered predominately in white painted wood and hexagonal 1" x 1" tile, the spa's interiors aspire to a domestic cottage aesthetic. Design of the signature "Bedford Baths" makes reference to early 20th century American bathrooms, which were dominated by profuse architectonic tile mosaics. "Rainwater" showerheads, custom-designed as large sunflowers, and a custom "Bedford Blue" color, created early on by 3north for the resort's logo, honor the incredible mineral spring waters still in full use today.



Facing Page Ladies' Locker Room, Springs Eternal Spa. Conceptualized as a specifically American spa, the design was inspired by the historic cottage architecture of the resort's early 19th century bathhouses. **1** Artwork and interpretive plaque in the Pool Corridor, part of an exhibit that describes the history and development of Bedford Springs from 1796 to 2007. **2** The restored Spring Water Pool, constructed in 1905 and housed in a Classical Revival building that also includes a two-story solarium and capacious veranda. **3** The Bedford Baths, designed to facilitate alternating hot and frigid baths and showers, a health-giving regimen that originated at the resort in the 1920s. **4** Spa Coed Lounge, where spa-goers lounge before and after treatments. The grand, yet intimate space, with a fireplace at one end and a dining table (light meals may be delivered) at the other, opens out into the Spa Garden. **5** The resort's collection of historic Bedford Springs' mineral water bottles. Beginning in the mid-19th century, the spring water was bottled and sent out nationwide to meet demand for a "home cure."



Lodging



Lodging at Bedford Springs includes four historic “houses” reverently restored on the exterior and completely renovated on the interior. A new fifth lodge, the Springs Eternal House, added two floors of guest rooms and suites. Colors, wallpapers, fabrics, bath design and fittings, and artwork in guest rooms and corridors were designed in consideration of the historic date and name of each house. All beds receive a replica of the famous “Bedford coverlets,” and in each entry vestibule stands a ceramic vessel holding walking sticks. Rooms on the front and sides of the houses open directly onto historic porches.

Facing Page Reflected view of a guest room in Anderson House, where the rustic terrain of the resort's mountain setting rises up just outside the window. **1** Spa Guest Room, Springs Eternal House. Reproductions of the Bedford coverlets are provided on each bed at Bedford Springs. **2** Double-ended soaking tub for two, a feature of the spa baths in the luxurious senatorial and presidential suites of the Springs Eternal House. **3** Guest bath in the Stone Inn. The design of the sink, with oak cabinet, Pennsylvania bluestone counter top, and ceramic vessel bowl, reflects the early period of the building, constructed originally in 1806. **4** Guest rooms along the front and sides of the lodging buildings open onto the resort's historic gallery porches, designed originally for ventilation purposes and to provide sheltered exercise promenades.



Dining



Dining venues offer settings from formal to rustic. The Crystal Room, with its open kitchen, was made at once intimate and spectacular by close-up photographs of 19th century guests lit up by crystal chandeliers and mirrors. At the other end of the dining spectrum in the Colonnade is Che Sara Sara, a whimsical, walk-up counter café. The resort's two premium dining venues, Defibaugh's Table and The 1796 Room, are located in the core of the Stone Inn, constructed in 1806, and feature interiors that incorporate elements of its venerable history and ancestry. The new Frontier Tavern, the resort's watering hole, also located in Stone Inn, is a lively, 21st century interpretation of the work-a-day history of Bedford Springs.

Facing Page The Crystal Room, the resort's main dining room, where 19th century guests are featured in historic photographs dated between 1890 and 1895. **1** Detail of the Frontier Tavern in the Stone Inn where fourteen different historic wallpaper patterns enliven the walls. **2** New sign in Che Sara Sara, a café named in honor of the motto on the Duke of Bedford's family crest. **3** Defibaugh's Table, a dining venue in the Stone Inn, is located in the oldest room at Bedford Springs. **4** 1796 Room in the Stone Inn features original, hand-woven Bedford coverlets, which date from the early 19th century.

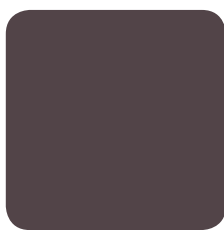
A decorative background featuring a stylized, light blue leaf pattern. The leaves are elongated and pointed, arranged in a branching, organic fashion across the page. The pattern is composed of several distinct clusters of leaves, with some leaves having small circular details near their bases. The overall style is minimalist and elegant, typical of a design guide or branding document.

Design Guide

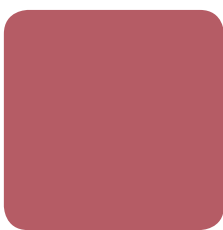
COLORS · PAINT



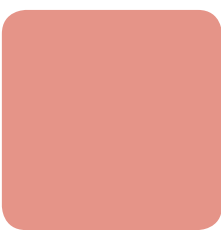
Benjamin Moore
2137-10
Otter Brown



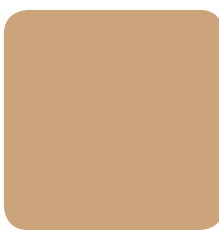
Benjamin Moore
2116-20
Vintage Wine



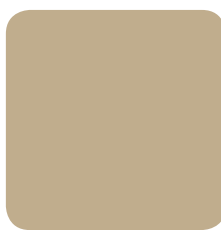
Benjamin Moore
2081-30
Vibrant Blush



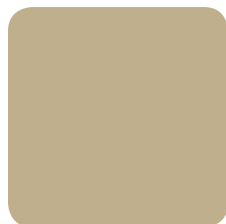
Benjamin Moore
2171-40
Passion Fruit



Benjamin Moore
2161-40
Acorn Yellow



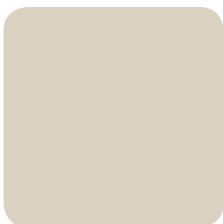
Benjamin Moore
HC-25
Quincy Tan



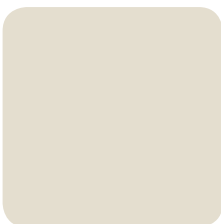
Benjamin Moore
HC-23
Yorkshire Tan



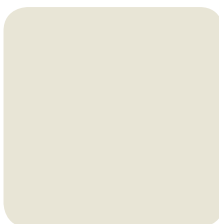
Benjamin Moore
HC-32
Standish White 50%



Benjamin Moore
HC-84
Elmira White



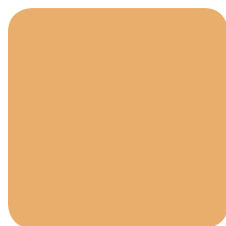
Benjamin Moore
OC-6
Feather Down



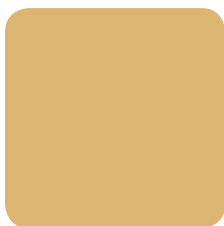
Benjamin Moore
OC-13
Soft Chamois



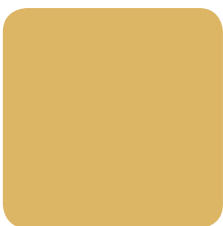
Sherwin Williams
6360
Folksy Gold



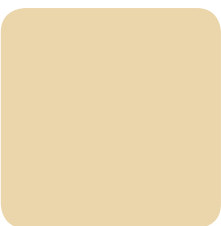
Benjamin Moore
2156-40
August Morning



Benjamin Moore
HC-8
Dorset Gold



Benjamin Moore
HC-10
Stuart Gold



Benjamin Moore
HC-10
Stuart Gold 50%



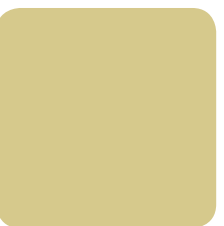
Benjamin Moore
HC-12
Concord Ivory 50%



Benjamin Moore
OC-111
Corinthian White



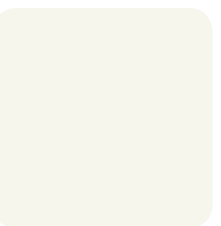
Benjamin Moore
2024-10
Chartreuse



Benjamin Moore
2146-40
Pale Avocado



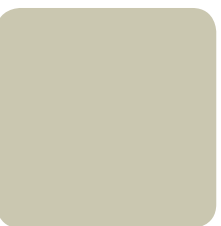
Benjamin Moore
HC-3
Greenmount Silk



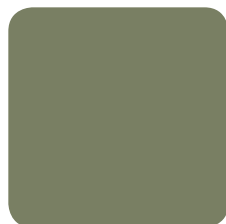
Benjamin Moore
OC-118
Snowfall White



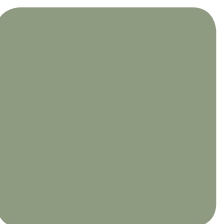
Benjamin Moore
2145-20
Terrapin Green



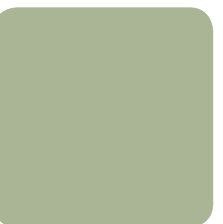
Benjamin Moore
2144-40
Soft Fern



Benjamin Moore
HC-122
Great Barrington Green



Benjamin Moore
HC-123
Kennebunkport Green



Benjamin Moore
HC-118
Sherwood Green



Benjamin Moore
HC-119
Kittery Point Green



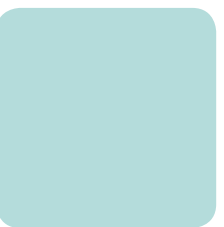
Benjamin Moore
2131-30
Lead Gray



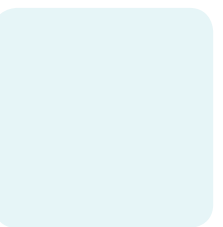
Benjamin Moore
HC-150
Yarmouth Blue



Sherwin Williams
6504
Sky High



Benjamin Moore
2052-60
China Blue



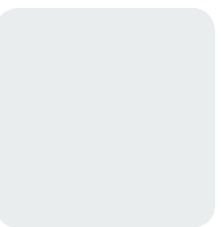
Benjamin Moore
2066-70
Light Blue 25%



Benjamin Moore
HC-154
Hale Navy



Benjamin Moore
HC-149
Buxton Blue



Benjamin Moore
HC-150
Yarmouth Blue 50%

WALLPAPERS



Brunschwig & Fil:
Gallier Diamond



Brunschwig & Fils:
Latrobe Topaz



Adelphi Paper Hangings:
Moses Grant Laurel
Harlequin



Adelphi Paper Hangings:
Bees & Stars



Adelphi Paper Hangings:
Moses Grant Jr. Stripe



Adelphi Paper Hangings:
Hamilton Urns



Farrow & Ball:
Brockhampton Star
BP 550



Farrow & Ball:
Brockhampton Star
BP 528



Farrow & Ball:
Brockhampton Star
BP 515



Farrow & Ball:
Ranelagh Papers
BP 1824



Farrow & Ball:
Ranelagh Papers
BP 1847



Farrow & Ball:
Block Print Stripe
BP 747



Carter & Company:
Leather Tapestry



J R Burrows & Company:
Phillimore Wreath



Carter & Company:
Hamil Hall Ceiling



Carter & Company:
Marsh Creek Wall



Carter & Company:
Tenney Gatehouse Wall



Carter & Company:
Cramer Kenyon Ceiling



Charles Rupert Designs:
Malabar



Cole & Son:
Dorset Pale Blue



Cole & Son:
Opera



Cole & Son:
Fioretti



Romo:
Kenzan Cardamon



Watts of Westminster:
Brandiles Khaki



Bradbury & Bradbury:
Roland
jasper green



Bradbury & Bradbury:
Herter Ceiling
aesthetic green



Bradbury & Bradbury:
Claire's Willow
eucalyptus



Bradbury & Bradbury:
Swyre Cross Ceiling
jasper



Bradbury & Bradbury:
Lily
jasper green



Bradbury & Bradbury:
Blossom & Block
aesthetic green



Mason & Wolf:
Somerset



Mason & Wolf:
Daisy



Mason & Wolf:
Sutton Dado



Scalamandre:
WP 81127



Mason & Wolf:
Trellis Ceiling



Porter Teleo:
Teleo

FABRIC



Kravet:
24851.516



Kravet:
Charlecote Park
turquoise



Kravet:
24914.9



Kravet:
Versailles
E22802



Kravet:
26915.916



Kravet:
26410.16



Kravet:
25774.316



Lee Jofa:
Adelaide Crewel
clover



Lee Jofa:
Bokhara Embroidery
coral



Rogers & Goffigon:
Parramore Island
red



Rogers & Goffigon:
Cyclades
kimolos



Robert Allen:
Janice
surf



Robert Allen:
Ancient Ways
cameo



Robert Allen:
Ancient Ways
ocean



Robert Allen:
Lecompte
portobello



Robert Allen:
Cardello
hibiscus



Robert Allen:
Yaffe
java



Chelsea Editions:
Napoleon Bees



Greef:
Avalon Check
blue & sea mist



Romo - Villa Nova:
Fete
magenta



Osborne & Little:
Lorca
mille pensees



Bergamo Fabrics:
May
2090.2



Beacon Hill Fabric:
Paris in Spring
mimosa



Beacon Hill Fabric:
Chrysanthemum
lily pink



Taffard Fabrics:
Neowsa #4



Delany & Long:
Buoy Sky



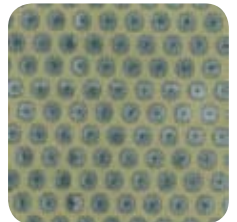
Malabar:
Chet 14



Morris & Company:
Autumn Flowers



Koplavitch & Zimmer:
Eugenia
bluebell



Decorator's Walk:
Velvet Dots
blue



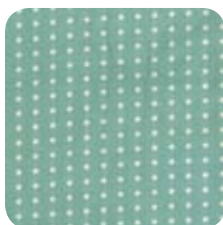
Highland Court:
Mango Floral Stripe



Old World Weavers:
A Tire d'Arle
printemps



Duralee Fabrics:
14447.57



Duralee Fabrics:
31641.19



Sunbrella:
Herbal
vellum rib



Sunbrella:
Coastal Spa Awning

LIGHTING



Authentic Designs:
5-light chandelier
CH-156



Authentic Designs:
CH187



Antique Lighting UK:
Antique Light Fixture



Vaughan:
Crystal Cage Chandelier



Vaughan:
Crystal Wall Light



Robert Abbey:
Newport 3-light Mini
Chandelier



PW Vintage Lighting:
Etched Hall Lantern
w/ Leaf Crown



Urban Electric:
Seven Springs



PW Vintage Lighting:
Medium Copper
Lantern



Visual Comfort:
Classic Ring Chandelier



Visual Comfort:
Three-Light Pimlico Chan-
delier



Visual Comfort:
Sloane Street Two-Light
Ceiling Mounted Fixture



PW Vintage Lighting:
Large Ribbed Globe
w/ Crown Fitter



Marston & Langer:
Arched Lantern



Visual Comfort:
Tall English
Hall Lantern



Visual Comfort:
Sloane Street
Shop Light



Visual Comfort:
Large Antique
Mirror Sconce



Lighting by Hammerworks:
Antique Tin Mirror Sconce
M-1



Authentic Electric Supply:
Oil Rubbed Bronze
Metal Sconce



Vaughan:
Cobham Mirror
Wall Light



Vaughn Lighting:
Oval Fretwork
Wall Light



Visual Comfort:
Boston Diffuser
Wall Sconce



Visual Comfort:
Two-Light Classic
Sconce



Decorative Crafts:
Antiqued Brass
Two-Light Lamp



Visual Comfort:
Low Column Plinth



Visual Comfort:
Boston Downbridge



Visual Comfort:
Boston Single Arm
Wall Lamp



Visual Comfort:
Scallop Sconce



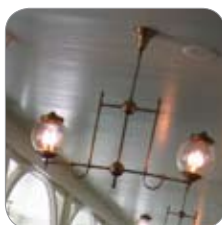
Visual Comfort:
Club Door Lantern



Visual Comfort:
Frame Makers Picture
Light



Decorative Crafts:
Two Light Lamp
5078



Conant Custom Brass:
Carriage Double
001-802



Lighting by Hammerworks:
TL1A Tavern Lights



Decorative Crafts:
Antiqued Brass Floor
Lamp w/ Antiqued Bronze
Shade 5404



Hanover Lantern:
Revere
8332BP



Andy Thornton Exterior
Lighting: Copper Station
Lantern (ATSLEL) w/
column and bracket

DRAPERY • CARPET



Fabricut:
topaz beeswax



Fabricut:
topaz greengage



Fabricut:
topaz gulf



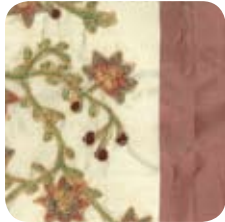
Fabricut:
topaz strawberry



Ralph Lauren Fabrics:
Corbrook
gold & ivory



Kravet:
Laurel Leaf Sheer
cream



Taffard Fabrics:
Ruyon #1



Taffard Fabrics:
Kuparuk #3



Taffard Fabrics:
Haggard #4



Taffard Fabrics:
Kylie #1



Taffard Fabrics:
Takli #3



Pottery Barn:
Crewel Floral Embroidered
Drape



Colefax & Fowler:
Brocade Stripe
green



Koplavitch & Zimmer:
Darvish
whistler blue



Koplavitch & Zimmer:
Iselda Stripe
soft yellow



Koplavitch & Zimmer:
Pinkus Plaid
berry



Kirsch:
Button Ball Finial
5629G



Kirsch:
Buckingham Windsor Finial
CWB208



Rejuvenation:
Burnished Antique Post
Holdback #EA2102



The Swan Co: Pattern
Glass Picture Hanger
aquamarine



The Swan Co: Pattern
Glass Picture Hanger
topaz



Restoration Hardware:
Glass Shower Curtain
Hooks



Merit Durkan Carpet
sisal weave pattern
tavern and pool rugs



Capel Rugs
filagree outdoor rug
front porches



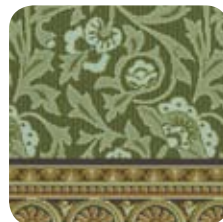
Clayton Miller Royal
Thai Carpets
petit point loop
cafe seating handmade



Clayton Miller Royal
Thai Carpets
axminster construction
eisenhower ballroom



Clayton Miller Royal
Thai Carpets
axminster construction
evitt prefunction



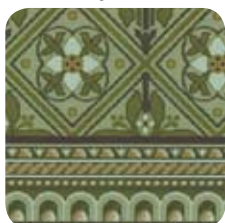
Clayton Miller Royal
Thai Carpets
axminster construction
fountain room



Clayton Miller Royal
Thai Carpets
axminster construction
grand stair



Clayton Miller Royal
Thai Carpets
petit point loop
library handmade



Clayton Miller Royal
Thai Carpets
axminster construction
meeting rooms



Clayton Miller Royal
Thai Carpets
petit point loop
main lobby handmade



Clayton Miller Royal
Thai Carpets
petit point loop
lobby handmade



Clayton Miller Royal
Thai Carpets
petit point loop
lobby



Clayton Miller Royal
Thai Carpets
petit point loop
registration handmade



Garnet Hill
pinwheel hooked rug
tavern entrance

FURNITURE



JMX International:
English Windsor Side
Chair w/ Splat Back



Martha Stewart Signature
Furniture: Karch Slat
Back Bench



Martha Stewart Signature
Furniture: Dearborn
Tufted Roll-Arm Armchair



Martha Stewart Signature
Furniture: Graham
Console Table



Martha Stewart Signature
Furniture: Wallingford
Caster Side Table



Martha Stewart Signature
Furniture:
Barlow Settee



Baker Knapp & Tubbs:
St. Kitts Table



Baker Knapp & Tubbs:
Tulip Chair



Mitchell Gold & Bob Wil-
liams: Carter Chair



Mitchell Gold & Bob Wil-
liams: Earl Chaise



Mitchell Gold & Bob Wil-
liams: Camp Hickory
Basket Table



Mitchell Gold & Bob
Williams: Camp Hickory
Turned Tea Table



RL Home:
New Bohemian
Spindle Chair



Victoria Hagan:
Wainscot Chair



Councill:
Jester Chair



Hekman:
Chaise Side Table



Up Country:
U101 Settee



Up Country:
Nantucket Sofa Table



Drexel Heritage:
Wilson Sideboard



Drexel Heritage:
Accents Francais
Collection Bench



Drexel Heritage:
Godenot Chair



Southcone:
Mallorca Game Table



Century Furniture:
Aldwych Lamp Table



The Portico Furniture Co.:
Carolina Rocker



Frazee's Wicker:
Bar Harbor Chaise



Anderson Teak:
Aspen Stacking Armchair



Warner Levitzson:
Kingston Lounger



Kravet:
Corfu Arm Chair



Lily Jack:
Bench
Q53799-48B



Fong Brothers Co:
FB-5117 Wing Chair



Cisco Brothers Furniture:
Catalina Chaise



Cisco Brothers Furniture:
Hopkin Chair



Cisco Brothers Furniture:
Savannah Ottoman



Hickory Chair:
Lowell Lounge Chair



Hickory Chair:
Stewart Side Chair



Hickory Chair:
Winterthur Settee

BATH FITTINGS



Designer Stone Resource:
Carrera Arabescato
Hexagon



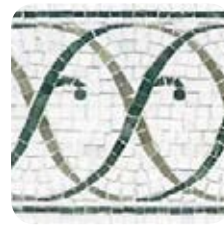
Designer Stone Resource:
Ming green & Carrera
Arabescato Marble Border



Designer Stone Resource:
White Carrera Arabescato
Marble Tile



Designer Stone Resource:
Carrera Arabescato
Marble Herringbone



Designer Stone Resource:
Swirl Border w/ Ming
Green & Carrera Arabes-
cato Marble



Designer Stone Resource:
Ming Green Marble
Herringbone



Designer Stone Resource:
Carrera Arabescato w/
Negro in Basketweave
Pattern



Danze:
8in. Round Sunflower
Showerhead



Danze:
4in. Round Sunflower
Showerhead



Waterworks: Highgate
Lavatory Faucet w/ Cross
Handles



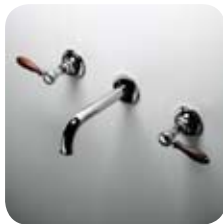
Lefroy Brooks:
Tub Filler



Waterworks: Round
Pressure Balance Valve
Trim w/ Diverter



Waterworks: Easton Deck
Mount Lavatory Set w/
Oak Handles
EALS-15K



Waterworks: Easton
Vintage Lavatory Faucet
w/ Oak Lever Handles



Christo Lefroy Brooks:
Classic Black Lever Taps



Kohler: Antique Wall
Mount Sink Faucet
K-159



Kohler: Caxton
Undermount Sink
K-2205



Kohler: Ladena
Undermount Sink
K-2214



Waterworks:
Hancock Bowl



Kohler: Harborview
Utility Sink Riverside



Kohler:
K-700 Vintage Bath



Kohler:
K-1183 Serif Bath



Kohler: Bancroft
Pedestal Sink
K-2347-8



Kohler: Bancroft
Water Closet
K-3487



Ginger Company:
Chelsea Double Toilet
Paper Holder
1108D



Ginger Company:
Chelsea Soap Dispenser
1114



Murray Feiss:
Paper Holder
BA1405BB



Murray Feiss:
Paper Holder
BA1005



Murray Feiss:
Soap Basket
BA1510PW



Baldwin Hardware:
Crystal Fillmore Rose
5800.260



Restoration Hardware:
Cabana Stripe Shower
Curtain



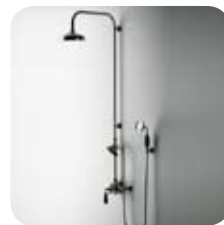
Restoration Hardware:
Hanson Hook



Restoration Hardware:
Traditional Clear Glass
Knob



Waterworks: Easton
Exposed Tub Filler w/
Black Porcelain Diverter
& Handshower



Waterworks: Easton
Exposed Thermo Shower
w/ Black Porcelain
Handle, Roser & 12" Rose
EASV34-K

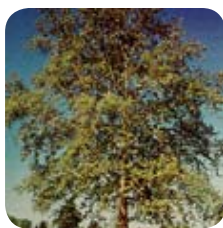


Waterworks: Easton
Handshower w/ Oak
Handle
EAHS-15K

PLANTS



Carpinus caroliniana
American Hornbeam



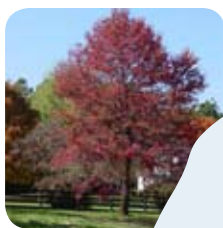
Platanus occidentalis
American Sycamore



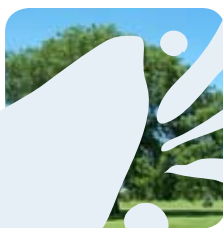
Crataegus viridis
'Winter King'
Winter King Green
Hawthorne



Chionanthus virginicus
American Fringetree



Nyssa sylvatica
Black Tupelo



Ulmus americana
European Elm



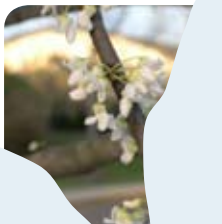
Prunus subhirtella
Higan Cherry



Magnolia virginiana
Sweetbay Magnolia



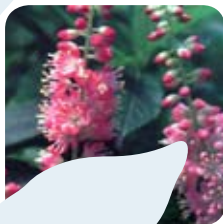
Cercis canadensis
'Forest Pansy'
Forest Pansy Redbud



Cercis canadensis
American Redbud



Hibiscus syriacus
'Rose of Sharon'



Clethra alnifolia
Sweet Clethra



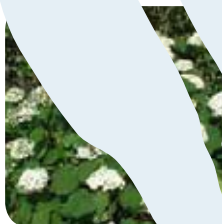
Rosa rugosa
'Belle Poitevine'
Belle Poitevine Rose



Rosa polyantha
'Marie Pavie'
Marie Pavie Rose



Buxus microphylla
'Wintergreen'
Wintergreen Boxwood



Hydrangea arborescens
'Annabelle'
Annabelle Hydrangea



Clematis latifolia
'Mountain'
Mountain Clematis



Buxus microphylla
'Wintergreen'
Wintergreen Boxwood



Taxus x media
English-Japanese Yew



Fothergilla gardenii
Dwarf Fothergilla



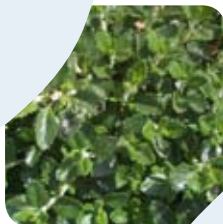
Rosa 'New Dawn'
New Dawn Climbing Rose



Rosa rugosa 'Blanc
Double De Coubert'
Blanc Double De
Coubert Rose



Rosa rugosa
'Sarah Lawrence'
Sarah Lawrence Rose



Teucrium chamaedryfolium
German Germander



Echinacea purpurea
Purple Coneflower



Lavandula x intermedia
'Grosso'
Grosso Lavender



Preovskia atriplicifolia
Russian Sage



Iris siberica 'Dear Delight'
Dear Delight Iris



Paeonia officinalis
'Immaculee'
Immaculee Peony



Wisteria sinensis
'Amethyst Falls'
Amethyst Falls Wisteria



Hedera helix
English Ivy (Baltica)



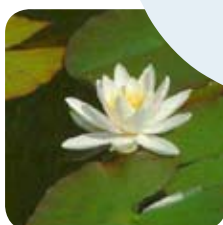
Nymphaea 'Mt. Shasta'
Mt. Shasta Water Lily



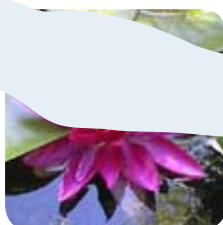
Nymphaea 'Perry's
Baby Red'
Perry's Baby Red
Water Lily



Nymphaea 'Red Spider'
Red Spider Water Lily



Nymphaea 'Venus'
Venus Water Lily



Nymphaea 'Vesuve'
Vesuve Water Lily

A decorative background pattern consisting of stylized, light blue leaf and branch motifs. The leaves are elongated and pointed, with some showing small circular details. The branches are thin and curved, creating a delicate, organic feel. The pattern is distributed across the page, with a denser cluster in the upper right and more sparse elements towards the bottom left.

Design Sketches



Conceptual sketches drawn by David W. Rau in 2003 in anticipation of the renovation of Bedford Springs.

